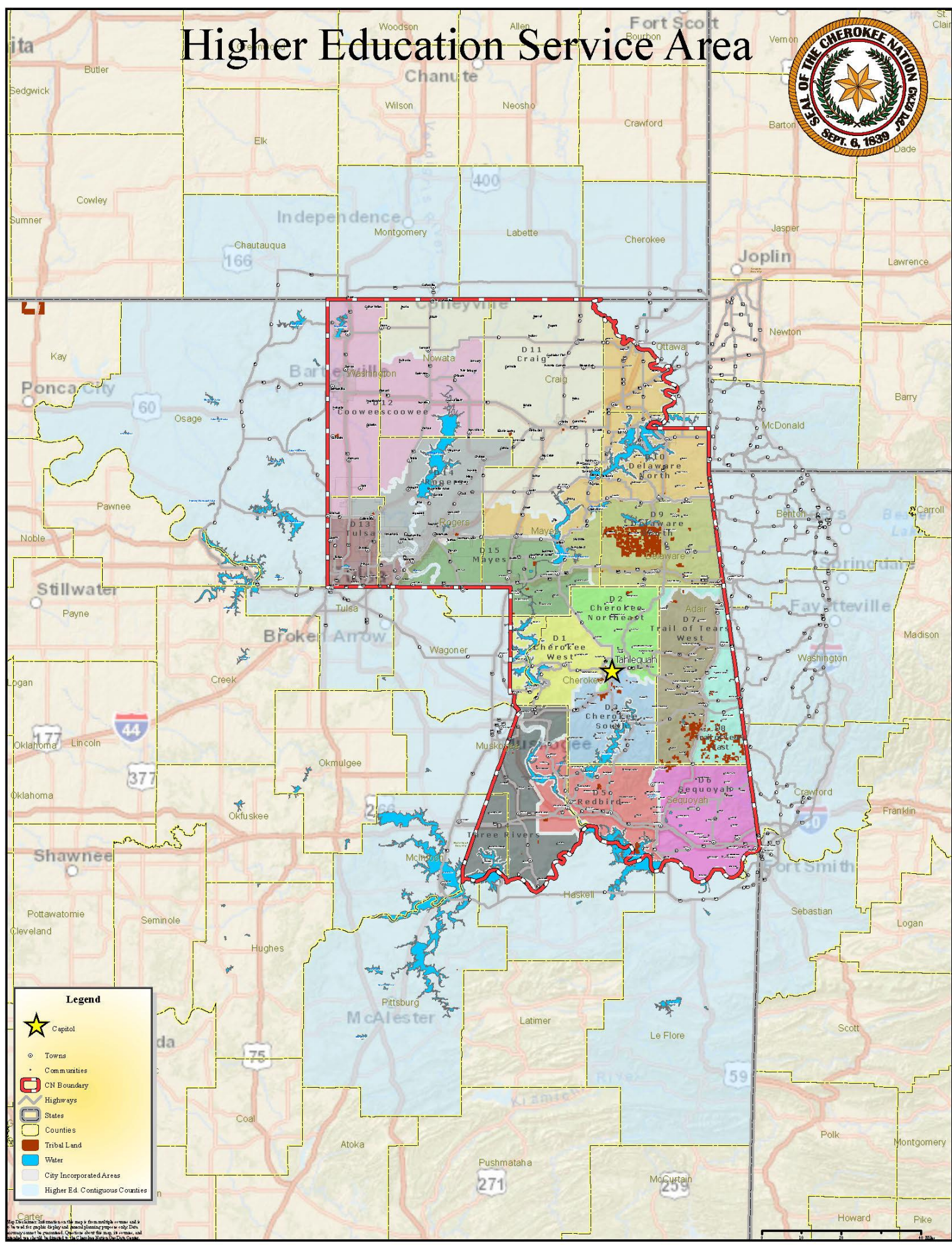


# Higher Education Service Area



**Legend**

- ★ Capitol
- Towns
- Communities
- ▭ CN Boundary
- ▭ Highways
- ▭ States
- ▭ Counties
- ▭ Tribal Land
- ▭ Water
- ▭ City Incorporated Areas
- ▭ Higher Ed. Contiguous Counties

Cartographer: [unreadable] 2014. All rights reserved. This map is for informational purposes only. Data accuracy cannot be guaranteed. Copyright 2014 by [unreadable].